

KALE MILLS

Lot Two

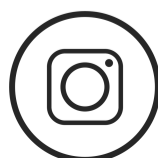


FOR MORE INFORMATION CONTACT:

LEXI BICKLER

CALL OR TEXT: 980.220.3455

LBICKLER@CHELBG.COM

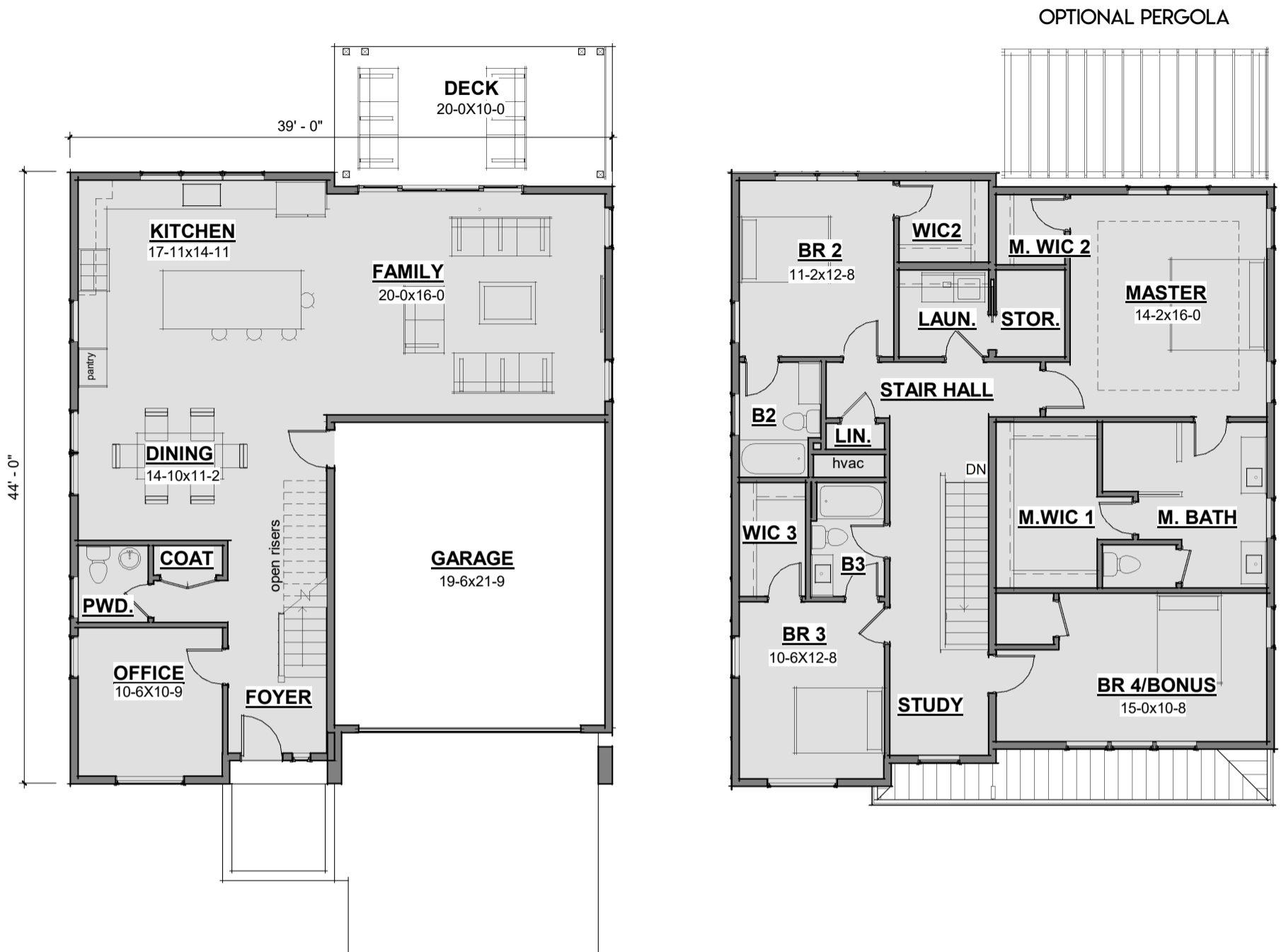


C H E L S E A
B U I L D I N G G R O U P

LIVE EXCEPTIONALLY.

CHELSEABUILDINGGROUP.COM

FLOOR PLAN AND SPECS



LIST PRICE: \$579,900

4 BEDROOMS, 3.5 BATHS, 2793 SF.

MLS #3465146

GENERAL DESIGN SPECS

- HARD STUCCO AND FIBER-CEMENT BOARD EXTERIOR
- OPEN FLOOR PLAN
- LARGE AND ABUNDANT ENERGY-EFFICIENT CASEMENT WINDOWS
- OPEN-RISER STAIRCASE
- TANKLESS, RECIRCULATING WATER HEATER
- STAINLESS MICROWAVE, GAS RANGE, AND DISHWASHER
- LARGE SLIDING DOORS TO ON-GRADE BACK DECK WITH OPTIONAL PERGOLA
- EUROPEAN STYLE CABINETRY
- QUARTZ COUNTERTOPS

ALL ELEMENTS ARE SUBJECT TO CHANGE WITHOUT NOTICE.